

World Missionary Evangelism



MAGAZINE TWO 2023

**A Spotlight On
Feeding The Hungry**



WORLD MISSIONARY EVANGELISM, INC.

P.O. BOX 660800
DALLAS, TEXAS 75266

THE VOICE OF
WORLD MISSIONARY EVANGELISM, INC.

Volume 65 Issue #2

Dr. John E. Douglas, Sr. **Founder**

Daniel Moore **President/CEO**

Ace Collins **Magazine Design, Editor**

Dora Brookshire **Editorial Assistant**

Contributors: Ace Collins, Karen McCarley,
Ghiorgi Cazacu

Published by World Missionary Evangelism, Inc. a purely religious church organization—a non-profit, non-stock 501(c)(3) corporation. Published in Dallas, Texas. Printed in the U.S.A. Receipts for contributions are tax deductible. Physical offices—2216 South Vernon, Dallas, Texas 75224, (214) 942-1678.

Mon-Thurs. 7:30 am - 4:00 pm.

Copyright—The entire contents of this issue of *World Evangelism* magazine are copyrighted © 2023 by World Missionary Evangelism, Inc. All rights reserved. Reproduction in any manner in whole or part, in English and/or other languages, is prohibited without written permission from the publishers.

BOARD OF REFERENCE AND FINANCIAL ACCOUNTING

Lynnette House

Dr. Lon G. Diehl

Vicky Nall

Fred Alvarenga

Karen McCarley

Dr. Randy Weiss

Daniel Moore

FINANCIAL POLICY

"Your love gifts support World Missionary Evangelism, Inc. and its affiliates around the world. WME will endeavor to honor donor gift designations. However, when the designation is not aligned with the mission and projects of WME, or if a need has already been met, donors agree that WME may use the funds in the area(s) of greatest need. Child or student sponsorship gifts will be spent on WME projects in the community where the child or student is located or on necessary overhead associated with WME projects in that community, unless WME notifies the donor otherwise."

Audited by Certified Public Accountants.



WORLD EVANGELISM

World Missionary Evangelism, Inc. is a wholly separate and independent organization. Its headquarters are in Dallas, Texas.



In this issue we spotlight mission opportunities in Ukraine, Sri Lanka, Romania, Mexico, and the USA.

WAYS TO FOLLOW & REACH WME!

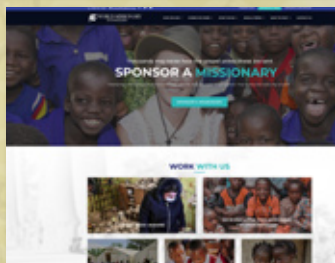
- (1) Contact us for prayer or other inquiries at 1-214-942-1678 (outside the USA)**
- (2) Visit our website at www.wme.org**
- (3) Email us at mainoffice@wme.org**
- (4) Send a fax to 214-946-7808**



Facebook *World Missionary Evangelism*
Watch our videos at
<http://www.youtube.com/user/wmedallas>

WME'S MEDIA MENU³

THE WEBSITE



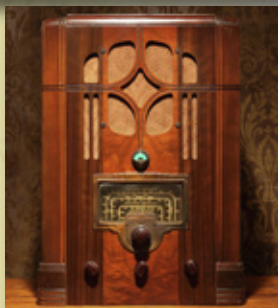
If you want the complete WME story, a place to start is our website at www.wme.org. On this site you will get to know who we are, where we work, what we do and ways you can get involved. You can also contact us through email directly from the website with any questions you might have about WME.

FACEBOOK

You can find us on Facebook by simply typing "World Missionary Evangelism" in the search window of your own Facebook page. Our Facebook page is where you will find photos, updates and videos. You can even leave comments. So please "like" us on Facebook and visit our page often.



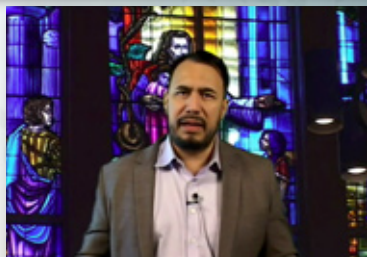
RADIO



For six decades, *WME Radio* has presented information on our work, shared Bible commentaries and given mission updates. You can still tune into our daily radio broadcasts on stations across the country, and now you can also listen to our programs at www.wme.org/radioprograms.html.

YOUTUBE

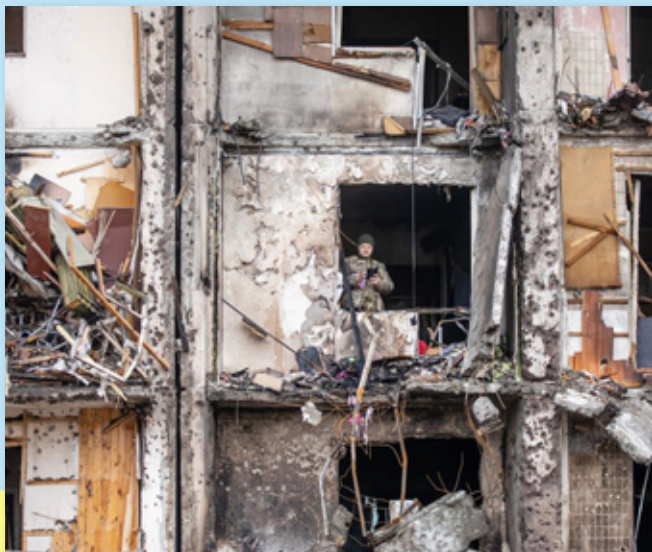
WME's YouTube channel is where you can see and hear about our mission outreach. To subscribe to our channel, just search for "WME, Inc TV" on YouTube. You can also find information on more Bible commentaries at www.wme.org. Don't miss these opportunities to learn more about the Bible.



UKRAINE REFUGEE MISSION

Then said Jesus unto him, put up again thy sword into his place: for all they that take the sword shall perish with the sword.
Matthew 26:52

For the people living in Ukraine each day is filled with fear, apprehension, and panic. The physical and mental toll is unfathomable. They are not as much living as they are surviving. Life is moment to moment.



So much of the Ukraine is in ruins. So many of the refugees have had their homes destroyed.

Ukraine has a population slightly larger than California and over the last 18 months more than 50,000 civilians have been killed by bullets, bombs, and missiles.

Another 15 million have been displaced. More than 25,000 military members have died while hundreds of thousands have been injured.



The team we support in Poland has been working day and night to aid the refugees.

Just months after the Ukraine war broke out, WME sent a team which included our president and executive secretary, to Eastern Europe to observe the cost of this conflict. What Daniel and Karen saw was horrific. The

scenes were numbing. Despair, heartache, and loss was evident as refugees poured into Poland. Daniel and Karen witnessed women with children who had to leave their husbands behind to fight an invasion. There was also the elderly who'd lost their homes.

At the beginning of the war, a Polish-Ukrainian crisis team was formed by a church to gather and send resources across the border. We immediately seized an opportunity to partner with this group in order to help those most deeply affected by the war. With a need for food and other supplies vital, we first asked our donors to help purchase a van. You came through and that vehicle has helped to ease the pain and suffering of thousands. It's in constant use. The supplies you see pictured with this story were picked up and delivered by this van. Along with food and clothing, it has also brought hope and has become a symbol of compassion.

It's been a year and a half since war broke out and so many of the refugees fleeing that war have come to feel the loving touch of Jesus through the work of this team. Those on the ground have asked us to thank you for both your support and prayers. They are now praying for your help in completing a new project.

In November, the team was able to buy a building that is being prepared as apartments for refugees. A group of 20 volunteers from the United States joined the church's construction team, rolled up their sleeves, and began working to convert the abandoned structure into a safe, comfortable place to live for the refugees who had to pack up



Supplies, sorted by volunteers, are distributed to those who have nothing.



On a daily basis families are being reunited by the team.



The way the building looked before the team began to transform it into a refugee center and housing complex.

everything and flee the war zones. The photos you see on these pages tell the story of the beginning of the project.

Repurposing this building is so important that we are coming back to you to plead for support in helping complete the transformation of this long-abandoned but solid building. This project needs to be completed quickly. When finished it will impact thousands.

As Daniel and Karen witnessed, though the Ukraine war has shown humanity at its worst, it has also presented a chance to see Christians at their best. For eighteen months, we have observed great love and testimonies of limitless kindness. Church members in Poland have opened their homes to refugees. People



(Above) Each step the team takes begins with prayer.

(Below) Demolition has to happen before renovation can begin.



have given up their vacations to take supplies to the border. Volunteers have greeted new refugees with aid, understanding, and acceptance. They have provided more than just food and clothing, they have also brought hope and compassion. If you have given or prayed for the Ukraine, you have been a part of this mission. You have been the hands and feet of Jesus. Would you help us again now?



Renovation is well under-way but still much work needs to be done.

This work of housing, feeding, and providing all basic needs will continue until the war is over. Only when the people of Ukraine can go home to rebuild their lives will it end.

HOW YOU CAN GET INVOLVED

1. Paint, Wood and Flooring...Gift of \$100

2. Beds and Bedding... Gift of \$250

3. Pots & Pans...Gift of \$50

4. Kitchen Appliances... Gift of \$500

5. Where Needed Most...Gift in any amount



Some of the members of this amazing team of volunteers!

Christmas USA

Now when Jesus was born in Bethlehem of Judaea in the days of Herod the king, behold, there came wise men from the east to Jerusalem, Saying, "Where is he that is born King of the Jews? For we have seen his star in the east, and are come to worship him." And when they were come into the house, they saw the young child with Mary his mother, and fell down, and worshipped him: and when they had opened their treasures, they presented unto him gifts; gold, and frankincense, and myrrh.

— Matthew 2:1-2, 11

For a majority of us, Christmas is the most wonderful time of the year, but for many others the holidays offer little hope, love, or compassion. Each year we try to change that sad reality one life at a time.

The WME Christmas Project is about much more than giving presents, it's about bringing value to those who believe no one cares. For World Missionary Evangelism Christmas becomes a time when we can turn sadness into joy!

This year, as always, WME's annual Christmas program will supply food baskets to poor families who find it difficult to put meals on the table. We also



will provide toys to children and teens who would have little to nothing at Christmas. Just imagine — a gift you share might be the one sign a child receives this year that someone loves them!

Because of the distance between our offices and the people we reach, we must shop early, and we hope you will join us. Currently, we need to order food

and purchase items like toys, games, books, puzzles, dolls, crayons, coloring books, balls, sporting equipment, scented lotions, watches, clothing, coats, scarves, gloves, shoes, and children's Bibles. We also need gifts for teenagers. But this mission doesn't stop with children.



WME works with women's shelters caring for individuals and single mothers with children (see page 10). This mission restores hope and paves the way for fresh starts. Our Christmas goal is to provide basic items like toiletries, cutlery, pots, pans, towels, bedding and pantry items. We also supply diapers, wipes and bottles for infants and toddlers. Of course we need presents too.

There are homeless men and women living on the streets who need help to make it through the winter. We strive to provide them with coats, gloves, blankets, shoes, warm meals, and toiletries as Christmas presents.

If you would like to send items, ship your gifts to WME's offices at 2216 S. Vernon Avenue, Dallas, Texas 75224. Mark each package for our USA Christmas Project. Please do not wrap gifts. We need to select toys and clothing suitable for the age and size of each child receiving a gift.

If you would like to send monetary gifts to help WME purchase needed items for our annual Christmas programs, please mail those designated donations to World Missionary Evangelism, P.O. Box 660800, Dallas, Texas 75266.

WME will be able to reach people in need this Christmas because of generous supporters like you. Donations in any size or amount are very much appreciated! Please join with WME to bless others and demonstrate the mercy of God this Christmas season!

Stopping Abuse!

Wherefore I say unto thee, her sins, which are many, are forgiven; for she loved much ...And He said to the woman, 'Thy faith hath saved thee; go in peace.'

Luke 7: 47-50

WME is blessed to partner with an organization that reaches women whose lives have been devastated by drugs, sex trafficking, exploitation, poverty, and domestic violence. To assure the safety of the women being helped, our partner operates under the radar, but their services are transformative.



The backgrounds of the women at this shelter may differ, but each story is heart wrenching. They come to this Christ-centered shelter from all over the United States. Some are referred by government agencies, while others find this oasis of hope on their own. They range in age from teens to middle-aged. Some are single mothers with young children.

Abuse and addiction rob individuals of self-respect, and even steals their humanity. If you visit with those who are abused and have fallen prey to addiction, they are filled with shame and self-loathing. Their eyes are void of life. They have no spark in their souls. They are convinced they have no value. They often think of suicide as their only path of escape. Deep down women who are abused or addicted long for a second chance but fear they



will never escape the trap of abuse. But this shelter offers them a path for escape.

For over a year, the women and children in this program are provided food, clothing, shelter, and other necessities. Those suffering from drug addictions go through detox under the supervision of a qualified medical doctor. This comprehensive rehabilitation program includes Bible studies, prayer time, individual and group counseling, mentoring, financial and parenting classes, computer training, legal consultations (as needed), dental and medical treatments, and job preparedness classes. During these months these women and their children find healing for their bodies, souls, minds, and spirits.

When they are ready to live on their own, they are assisted in securing a job. The program also finds each woman an apartment and helps them furnish it. From arrival to graduation, there is no charge. Through the love given by Christians, the women learn that Jesus offers forgiveness, restoration, and a new way of living.

As you can imagine, a shelter that provides comprehensive rehabilitation has many ongoing needs. The women treated often arrive with only the clothes on their backs. Personal hygiene products like soap, shampoo, body lotion, toilet paper, paper towels, and toothpaste are always needed. Meat, fresh vegetables, fruit, and canned goods must be purchased to feed the women and children. Household items like plates, silverware, towels, and sheets must be obtained. So must medical care for abuse and for drug addiction.

We implore you to consider the needs of this outstanding women's shelter. Your support will make a difference in the healing and restoration of these women and will give them and their children the opportunity to find acceptance, self-respect, and new life in Christ.

HOW YOU CAN GET INVOLVED

- 1. Personal hygiene products...Gift of \$50**
- 2. Meat, veggies, & canned goods...Gift of \$75**
- 3. Medicines & medical care....Gift of \$100**
- 4. Household items plates, towels, sheets...Gift of \$50**
- 5. Women's shelter day-to-day expenses...Gift of any amount**



Spotlight on...

PRESSING NEEDS



SCHOOLS AND CHILDREN'S HOMES

REPAIRS AND UPKEEP: Just like our own homes, schools, and children's homes have equipment that breaks down, furniture and appliances that need to be replaced, and roofs, windows, and doors that must be repaired. Keeping up with these unbudgeted items costs money. **A gift of any amount** can help us with this continual need. Utilities are also a pressing problem for our facilities. **A monthly gift of \$100 or more** can help us provide the utility service that is required to serve our sponsored children.

MEALS FOR CHILDREN IN OUR SCHOOLS:

A majority of the children we help educate come from impoverished backgrounds. In these places school lunches are not free. The meal you provide a child is often the only meal that child will receive that day. **A gift of \$15** can help us provide a weeks' worth of school meals for a poor child in a developing nation. This is a life-saving program.



CHRISTMAS PRESENTS FOR SPONSORED CHILDREN OVERSEAS:

With a gift of just \$5 to \$10, you can send items like new underwear, socks, towels, or bedding. To you that might seem trivial, but to a poor child that's a Christmas wish come true. **A gift of \$15 to \$25 dollars** can provide a present that will be forever cherished. **A gift of \$100** could help us purchase Christmas presents for children in our Children Homes or sponsored children who still live with family.

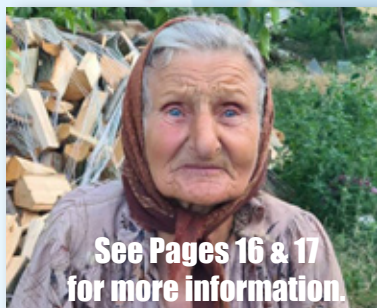


SPREAD JOY WITH A FOOD BASKET TO A FAMILY OR A CHRISTMAS

PRESENT TO A CHILD: Annually, WME food pantries in the USA supply food baskets to poor families so they can have a special meal during the holiday season. And there are children, teens or handicapped individuals who hope for a gift at Christmas but may receive nothing without our support. Your **gift of \$25** to USA Food For Hunger can spread joy to needy families and precious children at the holidays.

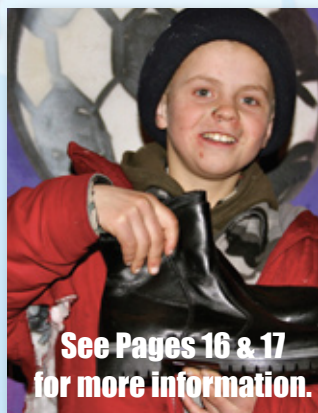
REACHING WIDOWS AND THE ELDERLY IN

EASTERN EUROPE: In Moldova and Romania, we can reach the elderly who live in abject poverty and have no government assistance. **With a gift of \$30** or more you can help us provide clothing, coats, shoes, blankets, food and medicine. These people are gentle and loving but have been forgotten by their families and the world. They truly are the least of these.



SEND WINTER BOOTS TO CHILDREN, WIDOWS, ELDERLY OR MISSIONARY FAMILIES IN EASTERN EUROPE:

In Eastern Europe, we are involved in an Annual Shoe Project. In Moldova, there is a Christian shoe manufacturer who provides winter boots and shoes at minimal cost. These good quality shoes and boots are made to withstand long, harsh winters. Our WME Ministry Partner supplies these shoes to children in state-run homes, elderly in area facilities, the poor and national missionary families. **With a gift of \$30**, you can bless someone in Eastern Europe with a warm pair of winter shoes.



COWS, GOATS, RABBITS & CHICKENS:

With farm animals, a family can enjoy eggs, milk, cheese and other products. They also can earn money by selling food and animal offspring. Provide a flock of chickens — **\$100**; a pen of rabbits — **\$100**; pair of milk goats — **\$100**; a pig or hog — **\$200**; or milk cow or water buffalo — **\$300**.





**See Pages 18 & 19
for more information.**

FEEDING SLUM CHILDREN IN SRI LANKA:

Our team in Sri Lanka works in slum areas where hungry children often dig food out of trash. As a part of the mission to provide children with education, safety, and Biblical lessons, there is also a feeding program. The meals this mission supplies are life savers. **A gift of \$25 or more** can help distribute meals to children from extremely poor families. During this time when Sri Lanka's economy is in chaos, this program is vital.

DISASTER RELIEF: How many of us have been moved by images of men, women, and children grappling with a disaster that has suddenly turned their lives upside down? Families devastated by a war or natural disaster have urgent needs for staples like food and shelter. Your **gift of \$25** helps WME distribute items like rice, grains, beans, corn, and oil to desperate people. Your **gift of \$20** can help provide blankets, mosquito netting or pillows to a family starting over. This month we are asking for **special gifts to help victims of a storm in Mission, Texas.**



WME HEADQUARTERS: Due to inflation, the cost to maintain our sixty-year-old facilities has gone up. The price of utilities, maintenance, transportation, mailings, communications, and equipment have doubled over the past decade. We do not want these costs to affect our ability to reach the lost and suffering in the mission field. **A designated gift of any amount** for our office would enable us to meet our expenses and expand our missions and outreach in developing nations.

**Designated gifts provide for needs that
may fall outside our sponsorship programs.
Please consider helping us with one of
these this month!**

Share The Good News!

Do you have family, friends or a church that would like to receive our magazine and newsletter?

Call 1-214-942-1678

or email

mainoffice@wme.org to share their addresses, and we will send them our publications at no charge.



Do you have a will?

Many experts believe it is one of the most important documents that you can put in place for your loved ones.

Did you know that many supporters of World Missionary Evangelism choose to use this legal document to set up a final memorial gift to WME?

This may be something you are interested in doing as well.

For those who are thinking about putting a will or trust in place and who are considering what issues or questions to raise with a legal and/or tax professional, one tool that can help you start this process is our brochure **GIVING THROUGH YOUR WILL**. It is yours free and without obligation.

Simply send your written request for *Giving Through Your Will* to:

WME, Inc.
P.O. Box 660800
Dallas, Texas 75266

You can also send your request by e-mail to mainoffice@wme.org

Because the legal and tax requirements for setting up a will or trust vary widely from state to state and from country to country, you will need to contact a legal and/or tax professional within your area — someone with the expertise and knowledge to help you.

Reaching The Poor In Eastern Europe

Open thy mouth, judge righteously, and plead the cause of the poor and needy.
Proverbs 31:9

In areas of Romania and Moldova, where WME supports missions, we have been made aware of an urgent need for providing fire wood for elderly widows. These women, living in tiny homes, are on fixed incomes of under \$100 per month. That amount can't meet their basic needs for food and essentials, much less the wood that is necessary to keep their homes warm during this area's bitter winters. The price of a supply of wood to heat a small house for the entire winter season has increased to \$750. Without this firewood, these women can't cook or keep their homes warm. If we don't provide help, some will die.

Providing a seasonal supply of wood for a widow could be a wonderful project for a church, Sunday school class, Bible study group, a business, a civic organization, or a family. Would you place these widows on your prayer list while also considering giving the funds needed to sustain one of them through the darkest months of the winter season? The photos on these pages show the need and the answer to that need. We are asking you to listen to the pleas for help.

While we want to focus on the plight of widows, there are other missions in Romania and Moldova that need support as well. At Cornesti there is a state-run orphanage. Government resources are limited, but the dedicated staff works hard to give the needed care. Still, what is provided is barely adequate to meet the children's most basic needs. The ministry team we support visits this home

**This wood will take this
widow through the winter**



regularly bringing shoes, socks, underwear, towels, and clothing, as well as toys and books. On each visit they also share the Gospel. These precious children need security, hope, and compassion. Could you pledge to help them during this holiday season?



In Roma, the gypsies are the largest minority and have long suffered discrimination and rejection. Our team ministers to these people and we are seeing revival in their communities. Due to their poverty, the Roma gypsies lack food, basic necessities, housing assistance, and Bibles. These are people who need our love and support as they grow in Christ.

We have highlighted the moment's most pressing areas of concern. The box on the right presents several missions you can help support in Eastern Europe.



The team with one of the widows who is provided help

HOW YOU CAN GET INVOLVED

- 1. Supplies for children at state-run home — \$50 gift**
- 2. Sporting goods and simple toys for children — \$30 gift**
- 3. Food For Hunger to children, elderly & Roma communities — \$100 gift**
- 4. Basic necessities for the elderly — \$30 gift**
- 5. Wood/coal to heat home of a poor widow — \$750 per year**

Feeding Slum Children In Sri Lanka

But whoso hath this world's good, and seeth his brother have need, and shutteth up his bowels of compassion from him, how dwelleth the love of God in him? My little children, let us not love in word, neither in tongue; but in deed and in truth. 1 John 3:17-18

The poorest children in Sri Lanka are suffering as they battle hunger and neglect. Living in chaotic and dangerous slums, they search through trash for food, while dodging the violence found around each corner. WME and our team are in place to save these children, but we need you to expand this vital mission.

Sri Lanka was once one of Asia's economic success stories, but since 2020 it has disintegrated into chaos. Covid, major flooding, crop failure, fuel shortages, and inflation combined to create a destabilization of both the economy and the government. The inflation rate at the beginning of 2023 was over 50%. Therefore, due to job and wage cuts, unemployment and hunger are rampant. So, Sri Lanka now has a much greater need for feeding programs than at any time in the recent past. It's little wonder that people are frantic, despair is commonplace, and suicides are on the rise.

In the face of overwhelming odds, we are determined to do something. And with God's help we will! The place we have chosen for our relief effort is not an area that many will ever visit. The crime rate is high so there is danger on every corner. Yet, we feel called to go to the dark places where the light of hope rarely shines. We go there because we know that Christ would also seek out the most desperate people providing them with both food and love.



We have identified over 500 families in the slum areas of Obeysekarapura and Bandaranayakapura, located in the Rajagiriya region, who have been devastated by the current economic crisis. These are drug infested communities where most men are addicts and the women have been compelled to go to work to support their families.

Because of their jobs, these mothers have had no choice but to leave their children at home in vulnerable



and unsafe situations. To help these poor families, we have created a feeding program for children and youth. Not only are we using this outreach to meet physical needs, but also as a vehicle to spread the love of Jesus and share the message of hope during these trying times.

We need gifts for Food for Hunger in Sri Lanka. A donation of any amount will save lives and open the door for Gospel outreach. Please consider providing a special one-time gift for this need. We are also praying that a family, a Bible study group, a Sunday school class, a business organization, or a church might sponsor a monthly feeding program in Sri Lanka. This would be a tremendous way to emphasize mission outreach and consistently meet the needs of those living on the edge between life and death.

You can also make an impact by sponsoring a child or missionary. See the urgent needs box on the right to find more ways to be a part of this outstanding work.

How You CAN GET INVOLVED

**1. Feeding Program
...gift of any amount**

**2. Children's Bibles
...\$10.00 each**

**3. Child Sponsorship...\$35.00
monthly**

**4. Native Missionary Sponsorship ...
\$40.00 monthly**

**5. School Supplies...
Gift of \$25**



Feeding Indigenous Children In Mexico

“Verily I say unto you, Inasmuch as ye have done it unto one of the least of these my brethren, ye have done it unto me.”
Matthew 25:40

The first thing that hits you when you walk among the indigenous people of Mexico is their joy for life. Despite living in dire poverty, they greet you with huge smiles and warm words. The next thing you note is their sincere thankfulness.



While they appreciate the help the mission team provides with food, education, medical, and spiritual guidance, they are also genuinely thrilled that someone cares enough to make the long trek to their village. They welcome you as if you are a long-lost relative that has been gone for years and has finally come home.

The woman and her child, as well as the children shown below, are benefiting from our partner's work in feeding and education.

Everywhere you turn, there is poverty. The modern world has seemingly passed by these people. The things we take for granted don't exist in this place. These people have little more than the clothes they wear. They don't have cell phones in their pockets, televisions in their small homes, or kitchen appliances. Despite the heat, they live without air conditioning. The land they farm produces almost nothing. The clothes children wear are hand-me-downs or have been given to them by the missionaries. And still, they don't complain.



Our work with the indigenous people of

Mexico is a new project for WME. Partnering with local missionaries, we are committed to answering the call to share with them God's love and compassion. So, what do we need?

Food is the most important part of this mission. In this area it's not uncommon for children to go without meals. Food for Hunger programs can stop a great deal of the suffering. A one-time gift would alleviate some of the issue, but we are praying that some of you will help provide sustained giving for Food for Hunger for this Mexican village.

The children are eager to learn, but the schools here are under equipped. These families know that obtaining an education is the way for these students to escape the poverty that has ensnared these people for generations. So, we are also asking for gifts for school supplies, backpacks, and supplies for teachers.

Sickness is a daily part of life here. There is no local hospital. The exams, treatments, and medicines these families receive are in large part thanks to missionaries. So, a one-time gift for medical needs is another important part of this outreach.

I wish you could meet these people. I wish you could feel their love and thankfulness. I wish you could talk to them about their needs. I believe they would touch your hearts. Please pray for this new opportunity in Mexico.

HOW YOU CAN GET INVOLVED

1. Food for hunger in any amount

2. School supplies...\$35

3. Backpacks...\$30

4. Teacher supplies...\$50

5. Medical care...\$100



A missionary with some of the indigenous people in Mexico. Food for Hunger programs are saving families.

SPONSORSHIP

Touching A Life Everyday Of The Year!

83134 MABLE, 13 years old, Nigeria

Her father and mother are both in poor health and the family lives in extreme poverty. Mable is a sweet, happy child, and she loves singing.



86590 GULSHAN, 8 years old, India

Gulshan's parents are poor daily laborers, and it is not possible for them to feed or provide a good education for their children, so Gulshan's father brought him to our center. Gulshan likes to play cricket with his friends.

85823 CHRISTIAMAE, 10 years old, Philippines

Christiamae has a sister and a brother, she is the youngest in the family. She is a very witty girl and enjoys coming to our Sunday school. Her hobby is singing.



85828 JIAN, 11 years old, Philippines

Jian's father is a carpenter while his mom stays at home to care for the family. He attends church along with his grandmother and is an active member of the children's church. He enjoys dancing and playing with friends.

85472 BRIAN, 10 years old, Kenya

Brian lives with his father. His mother is not a part of his life. His father has very little income and struggles to provide food and an education. Brian enjoys being at our center and playing football with the other children.



Native Missionaries

Spreading the Word to the Lost!

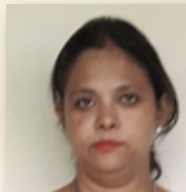
83778 EDGARD, 44 years old, Nicaragua

Edgard is sub-director of the school. He and his wife attend an evangelical church. He is contributing to the Christian education of both girls and boys. He has 2 children.



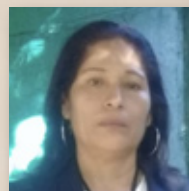
85006 VERONIKA, 43 years old, India

Veronika was born in a Christian family and accepted Jesus as her personal Savior. She feels a call to the ministry and has led many friends and neighbors to the Lord.



83777 MARTHA, 54 years old, Nicaragua

Martha teaches 1st and 2nd grades. She also likes to participate in extracurricular activities. She is responsible for the school garden that guarantees nutritious and healthy meals for our children. She is a mother of 5 children.



P.O. Box 660800 Dallas, Texas 75266

214-942-1678

(Mon-Thurs 7:30 AM - 4:00 PM)

www.wme.org Email: mainoffice@wme.org



**WORLD
MISSIONARY
EVANGELISM, INC.**

Email Address _____ @ _____ 2/MG/23

I am enclosing a gift to help WME with its ministry and work.

- ☐ Churches/Building Fund - \$3,000.00 and up ☐ Wells/Water Projects - \$3,500.00 and up
☐ Food For Hunger \$ _____ ☐ Native Missionary Sponsorship - \$40.00 # _____
☐ Child Sponsorship - \$35.00 # _____ ☐ Special Gift \$ _____
☐ United States Food For Hunger \$ _____ ☐ Where Needed Most \$ _____

Name _____

Address _____

City _____ State _____ Zip _____

☐ Check enclosed. (Please make your check payable to World Missionary Evangelism Inc)

Amount: \$ _____ ☐ MasterCard ☐ Visa ☐ American Express ☐ Discover

Credit or debit card # _____ Expiration date _____

Signature _____ Phone Number _____

If you wish to give by electronic check, please call 1-214-942-1678.

I understand that indirect as well as direct expenses are involved in this work and intend my pledge to be used for both. I understand and agree with your Financial Policy as stated in WME's *World Evangelism* Magazine. **Canadian Contributors:** Please address your mail and your contributions to: World Missionary Evangelism Canada, P. O. Box 6088, Fort St. John, B.C., Canada V1J 4H6. Make your checks payable to World Missionary Evangelism Canada (Canadian Registration #849145297 RR 0001).





P.O. BOX 660800
DALLAS, TEXAS 75266

ADDRESS SERVICE REQUESTED

☐ If you do not wish to receive this magazine, mark an (X) in the box at the left, clip this with your address and mail it to us.

IS YOUR ADDRESS CHANGING? Clip out your address. Send it with your new address, to the address above.

Non-Profit Org.
U.S. Postage
PAID
Permit No. 5013
Dallas, Texas