

World Missionary Evangelism

APRIL 2025
MAGAZINE 1



**The Places You're
Needed in 2025**

2



WORLD MISSIONARY

EVANGELISM, INC.

P.O. BOX 660800
DALLAS, TEXAS 75266

THE VOICE OF
WORLD MISSIONARY EVANGELISM, INC.

Volume 67 Issue #1

Dr. John E. Douglas, Sr. **Founder**

Daniel Moore **President/CEO**

Ace Collins **Magazine Design, Editor**

Dora Brookshire **Editorial Assistant**

Contributors: Ace Collins, Karen McCarley,
and Lynnette House.

Published by World Missionary Evangelism, Inc. a purely religious church organization—a non-profit, non-stock 501(c)(3) corporation. Published in Dallas, Texas. Printed in the U.S.A. Receipts for contributions are tax deductible. Physical offices—2216 South Vernon, Dallas, Texas 75224, (214) 942-1678. Mon-Thurs. 7:30 am - 4:00 pm.

Copyright—The entire contents of this issue of *World Evangelism* magazine are copyrighted © 2025 by World Missionary Evangelism, Inc. All rights reserved. Reproduction in any manner in whole or part, in English and/or other languages, is prohibited without written permission from the publishers.

BOARD OF REFERENCE AND FINANCIAL ACCOUNTING

Lynnette House

Dr. Lon G. Diehl

Vicky Nall

Woodrow Block

Fred Alvarenga

Karen McCarley

Dr. Randy Weiss

Daniel Moore

Diane Downs

FINANCIAL POLICY

"Your love gifts support World Missionary Evangelism, Inc. and its affiliates around the world. WME will endeavor to honor donor gift designations. However, when the designation is not aligned with the mission and projects of WME, or if a need has already been met, donors agree that WME may use the funds in the area(s) of greatest need. Child or student sponsorship gifts will be spent on WME projects in the community where the child or student is located or on necessary overhead associated with WME projects in that community, unless WME notifies the donor otherwise."

Audited by Certified Public Accountants.



WORLD EVANGELISM

World Missionary Evangelism, Inc. is a wholly separate and independent organization. Its headquarters are in Dallas, Texas.



**In this issue we spotlight
WME Missions around the
globe and our special
needs for 2025.**

WAYS TO FOLLOW & REACH WME!

- (1) Contact us for prayer or other inquiries at
1-214-942-1678
- (2) Visit our website at www.wme.org
- (3) Email us at mainoffice@wme.org
- (4) Send a fax to 214-946-7808



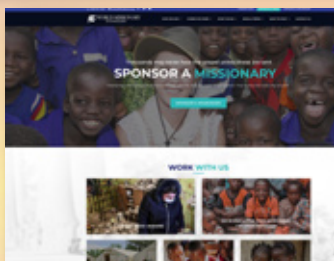
Facebook *World Missionary Evangelism*

Watch our videos at

<http://www.youtube.com/user/wmedallas>

WME MEDIA PAGE

THE WEBSITE



If you want the complete WME story, a place to start is our website at www.wme.org. On this site you will get to know who we are, where we work, what we do and ways you can get involved. You can also contact us through email directly from the website with any questions you might have about WME.

FACEBOOK

You can find us on Facebook by simply typing "World Missionary Evangelism" in the search window of your own Facebook page. Our Facebook page is where you will find photos, updates and videos. You can even leave comments. So please "like" us on Facebook and visit our page often.



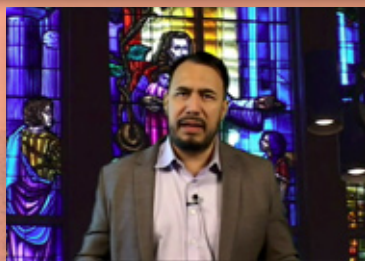
RADIO



For six decades, *WME Radio* has presented information on our work, shared Bible commentaries and given mission updates. You can still tune into our daily radio broadcasts on stations across the country, and now you can also listen to our programs at www.wme.org/radioprograms.html.

YOUTUBE

WME's YouTube channel is where you can see and hear about our mission outreach. To subscribe to our channel, just search for "WME, Inc TV" on YouTube. You can also find information on more Bible commentaries at www.wme.org. Don't miss these opportunities to learn more about the Bible.



4

WME Continues to Our USA Outreach

Thou shalt love thy neighbour as thyself. There is none other commandment greater than these.

Mark 12:31

WME's work in the United States has greatly expanded in the past decade, but in spite of this growth, our goal has remained the same. That goal is to follow Christ's instructions found in Matthew 25:35-40 by reaching the least of these.



There is a reason Yvonne Douglas, the daughter of WME's founder, initiated our USA work in Appalachia. Her father had grown up in the hills, knew the people, and had experienced their needs. So, even though her father began World Missionary Evangelism with a focus on overseas outreach, he never forgot the hills of home. When given the opportunity,

Expand reach

Yvonne began our domestic outreach in this region.

Her early focus was on the needs her family witnessed in Huntington, West Virginia. With the changing times, poverty had swept into this area like a fog that wouldn't dissipate. Hunger

was a problem for both young and old, and for both singles and families. Thus, working with people she knew and trusted, Yvonne began a mission intent on feeding the poor. For decades our work in Huntington has continued and the needs there are still great. We have found that in this area few are comfortable asking for help, so it has been despair that has driven them to our door. When they have knocked we have answered.

Those who come to our food pantry are people who have nothing. They live meal to meal, their clothes are worn, and their children often don't have school supplies. Some are senior citizens who have no family and who have to choose between purchasing food or keeping their utilities on. WME not only meets their food needs through our pantry but ministers to their spiritual needs as well. A gift of any amount given to Food For Hunger USA will help support our mission in West Virginia.

Our other food pantry was placed in an area one of our international





representatives called home...the Rio Grande Valley in Texas. Much like those whom we help in West Virginia, these people are barely scraping by. They've been forgotten by society and have little or no hope until they come to us. Our mission and needs here are much the same as in West Virginia. A gift of any amount given to Food For Hunger USA will help support our outreach in South Texas.

Through the years of service, our food pantry in Mission, Texas has fallen into disrepair. The roof needs new decking and shingles. Due to water damage, that also means fixing or replacing eaves and siding, as well as tearing out and replacing damaged or moldy sheet rock on both walls and ceilings. For us to maintain our pantry and continue to have a safe



place to store food for the poor, we should address these problems as quickly as possible. The cost for the repairs is \$7,500.

In the Dallas area we have several outreaches that fall under our USA Food For Hunger. One that has been very successful is working with local women's shelters supporting the needs of those running from abuse, fighting through addictions, or trying to escape life on the streets. Our needs in this mission include lotions, body spray, shower gel, toothpaste, paper towels, tissue, deodorant, shampoo, as well as things for babies such as shampoo, diapers, baby wipes, and lotion, and school supplies for older children. As needed we also help the shelters purchase refrigerators, stoves, washers, and dryers.



In Dallas, we also work to reach homeless veterans. We connect them with services, provide food, clothing, and spiritual guidance.

Another group that has become our focus are children whose families cannot afford school supplies. For our work in the Dallas area, a gift of any amount given to USA Food For Hunger will help us to continue this vital outreach.

We find when people experience God's love through the gifts of folks like you, they begin to realize they have worth. Therefore, the help they receive gives them a hope they can and will escape the seemingly endless cycle of poverty. What we do in America is at the very heart of Jesus' directives. We hope you can join us in this worthy mission.

Building The Foundation For a New Work In Mexico

*Blessed is he that considereth the poor: the LORD will deliver him
in time of trouble.*

Psalm 41:1

There are few things as exciting as founding a new mission. A year ago, a team from World Missionary Evangelism, made a trip to a remote region of Mexico to meet with some of the poorest people in North America. Those we visited are members of a tribe that has called this area home for hundreds of years. They attempt to raise food tilling poor, rocky soil, have little access to fresh water, and their children have few opportunities for education. Still, their generosity during our visit, graciously sharing what little they had, reflected the Christian spirit in ways we rarely experience. Being with them was one of the most worshipful moments our team has ever known.



We have many goals for these people. We want to help them rebuild a church, provide access to better education, create vocational training programs, and map ways to escape poverty. But as has long been our pattern during our sixty-six years of successful missionary work, our foundation is built on feeding the hungry.



For the past year we have been sending funds to help meet this tribe's food needs. But we must do more. We are asking if you might gift these indigenous people in Mexico much needed food through our Food For Hunger outreach. A gift of any amount can help us feed a child. If you were to pledge a monthly donation of \$25, \$50, or \$100, we could feed families who are living on the edge between life and death.

To make our outreach more effective, we also need to purchase a four-wheel drive vehicle. This truck or van would enable us to transport food, supplies, and missionaries into this remote mountainous region. A gift of \$26,000 would purchase a dependable used truck. This would be a wonderful team building project for your church, Bible study group, Sunday school class, family, or business organization. Consider all those whose lives would be touched through the gift. Think about the hungry people who would be fed, and those who've



never heard the Word learning about Jesus for the first time. Providing the mission with this vehicle would be transformational.

We wish you could have been with us on our first mission trip to this new outreach in Mexico. We know that if you could have met these people and seen their needs, you would move Heaven and earth to come to their aid. We need your help now to improve lives, bring hope, and share the Good News. Please consider a designated gift or a monthly donation to this new work.



The Vital Importance Of The Where Needed Most Fund

Every man according as he purposeth in his heart, so let him give; not grudgingly, or of necessity: for God loveth a cheerful giver.

2 Corinthians 9:7

When Dr. John E. Douglas, Sr. founded World Missionary Evangelism there was a singular goal and that was to sponsor needy children. While child sponsorship remained at the heart of our work, it was quickly expanded to address other needs Dr. Douglas saw in the mission field. If WME sponsored children, we needed facilities for those children. WME also needed staff on the ground in the countries where facilities were located. These needs led WME to supporting Native Missionaries, digging water wells, providing care for sick, and constructing churches. And as more needs arose, WME continued to expand its work. This



remains our model in 2025.



Where Needed Most is the giving platform allowing us to quickly move into important and life-saving situations. If a child needs to be placed in our care, we can use Where Needed Most funds to give vital support until we locate a sponsor. If there is a disaster and we must immediately provide special needs, Where Needed Most supplies those funds until our donors learn of the issue and send support. This is also true when one of our facilities has been damaged by a natural disaster and needs immediate repair. In those times the Where Needed Most fund becomes a lifesaver.

If you are looking for a way to join with World Missionary Evangelism and want to be on the forefront of our work, we need more people involved in the Where Needed Most fund. A gift of any amount can and will allow us to respond quickly and efficiently to any situation. Those who give to this fund on a monthly basis have the security of knowing their gifts are being employed at the most important times and are reaching the people in the greatest need.



We hope each of you finds a particular WME project to support. We must have those who sponsor children and missionaries, we need people and organizations for big projects such as wells and churches, but it's also our hope that you can give a bit more each month and designate it to Where Needed Most. By doing that, you enable us to act immediately when our representatives find a child on the edge between life and death, a widow who is sick, a family left homeless because of disaster or war, or to meet pressing needs in any number of other life and death situations.

Now that you know why this fund is so important, how much should you give? That's something only you can answer. We hope that you will pray about this most vital WME program. And if you can, we ask that you either give a one-time gift or perhaps designate a monthly donation so we can move quickly and efficiently to save lives and meet needs through Where Needed Most.



Education Providing Hope for the Future

To know wisdom and instruction; to perceive the words of understanding; to receive the instruction of wisdom, justice, and judgment, and equity; to give subtilty to the simple, to the young man knowledge and discretion... The fear of the Lord is the beginning of knowledge: but fools despise wisdom and instruction.
— Proverbs 1:2-7

WME's work began by saving the lives of children and providing them with a safe place to call home. With Child Sponsorship established, Dr. John E. Douglas, Sr., quickly expanded into educating the sponsored children, thus building a bridge from hopelessness to hope. For more than six decades, World Missionary Evangelism has constructed schools, supported pre-school centers, and provided primary and secondary school education across many countries. Later we will focus on the specific need of a school in Nicaragua but first let's spotlight all the ways our donors impact children through education.



We purchase and supply meals, we provide books, backpacks, school supplies, uniforms, and shoes. In many places we supply desks, support teachers, and are involved in daycare. Beyond basic education, we also provide vocational training. And each of these programs are possible thanks to our donors.

Through education WME has been able to change the course of thousands of lives creating success stories all across the globe. WME sponsored and educated children have grown to become doctors, nurses, teachers, missionaries,

engineers, and so much more. These people have changed their communities and their nations.

So, how can you help? A gift of \$35 a month will sponsor a child and assure them of being educated. You can provide a student with school supplies for \$25. In most places \$15 will buy a backpack and \$35 dollars will purchase a uniform. A desk is \$55. A gift of \$100 can provide several children with lunches for a week.

In 2025, we also need to continue to restore and remodel a school building in Nicaragua. For more than 30 years, this school has been instrumental in changing lives and developing minds. To



meet current government standards work is in progress to update and upgrade this facility. Painting has begun, the roof is being worked on, and new flooring has been ordered. The total cost for completing all work on this school is \$17,500. That amount will enhance the educational experience for our students, satisfy government standards, and keep the door open for Christian-based instruction in Nicaragua.

The photos on this page show some of the work that has been accomplished. It also presents the students who dearly love this school and their instructors. Perhaps your family, church, Bible study group, Sunday school class, or business organization can help us finish this vital and life-changing mission. Please contact us at mainoffice@wme.org to learn how to get involved.



Through a small gift that purchases school supplies or a large one that rebuilds a school, you can provide a means for children to gain the tools to escape poverty.

14 Pressing Needs In Eastern Europe

Pure religion and undefiled before God and the Father is this, To visit the fatherless and widows in their affliction, and to keep himself unspotted from the world.
James 1:27



In Moldova and Romania our work centers on orphaned children, impoverished elderly women, persecuted minorities, and churches. Focusing on these four areas is how we make the greatest impact in Eastern Europe and open the door to sharing the Good News.

At Cornesti there is a state-run orphanage. Children come to the facility because their parents are dead, chronically ill, or destitute. Government resources are limited, and while the dedicated staff works hard to give necessary care, what is provided barely meets the children's

most basic needs. So, our representatives deliver toys, fruit, shoes, socks, underwear, towels, and other clothing.

In Stefanesti, Romania, the frail and elderly are living in a nursing home that lacks both staff and support. These gentle and loving people have been forgotten by everyone but us. To the elderly we distribute winter clothing, blankets, mattresses, food, and medicine. These gifts save lives.

Much like those in orphanages and nursing homes, there are widows who the world ignores. These women remain in the small homes they once shared with family and live on government assistance of \$100 or less per month. Our team provides food and clothing and during the long winters helps supply wood that is



necessary to keep homes warm.

In Roma, the gypsies are the largest minority and have long suffered discrimination and rejection. Due to their poverty, the Roma gypsies lack food, basic necessities, housing assistance, and Bibles, so we help with these urgent needs.

For decades the team in Romania has worked in small communities to spread the Gospel, and their preaching and teaching have made an incredible impact. As new Christians rushed to be baptized, churches were started, and membership grew by leaps and bounds. Right now, in Romania scores of new churches are meeting in small homes. People are spilling out of doors and listening from porches. In many cases, homes are so filled with believers, there is no room for visitors.

Due to this growth we are involved in church building programs and have a project that needs to be completed. Currently the growing congregation is meeting in a home, but as you can see in the photo, the building has been started. Helping to finish this church would be a wonderful project for a family, church, Bible study group, Sunday school class, or a business. Email us at mainoffice@wme.org and we can share the specific needs and costs for different locations.



A donation of any amount can help our missions in Eastern Europe, but if you could provide monthly gifts it would allow us to consistently feed, clothe, and minister in this region.

These people truly are the least of these. Not only are they poor and forgotten, but without our support they have little hope. Please help us meet their needs. We also ask that you share the story of WME's outreach and missions with friends and family. The more people we have involved in WME the greater our impact.

Remembering Those We've Lost

WYMAN PYLANT, a man who served as an International Director for WME, died on January 15, 2025. Born on April 24, 1939, Wyman left behind a legacy of unwavering faith, boundless generosity, and a heart that embraced the world with love.

Wyman's care and compassion for children was boundless. To many, he was more than a missionary; he was a father figure, with numerous individuals affectionately calling him "dad," and their children referring to him as "abuelo." His adventurous soul led him to explore the world as he spread the Word. Everywhere he went he made new friends and touched their hearts. During those mission adventures, he would sample unusual foods, ride unstable vehicles, and cross into dangerous regions, always buoyed by his faith and sense of purpose.

Wyman's altruism knew no bounds. He did not hesitate to give away his personal belongings to help others, thus embodying the spirit of Galatians 2:20: "I no longer live, but Christ lives in me." This verse was a guiding light in his life, reflecting his deep faith and selflessness. At home, his devotion to his family was unwavering. He cared for his wife Cathy with steadfast love, especially during her prolonged illness, standing by her side as her guardian angel. He will be missed by his children, grandchildren, and great-grandchildren.

Wyman's life was a testament to the power of faith, love, and selfless service. He lived not for himself, but for others, embodying the very essence of Christ's love. His efforts at WME led to many coming to know the Lord. The foundation he built remains strong and the work he started continues.



MARCIA GAIL THOMPSON KITCHEN, of Huntington, West Virginia, died on February 3, 2025, surrounded by her children. Marcia was born June 29, 1950. Since childhood her focus was on the Lord. As an adult she worked alongside her husband as the founding pastors of the Barboursville Apostolic Church. Over the years, she served as organist, pianist, singer, church secretary, and Sunday school teacher. She was also a leader in the Ladies Auxiliary of the West Virginia District United Pentecostal Church International and worked many years at Guiding Light Religious Bookstore. She was a wonderful mother and grandmother.



Marcia's life was one of giving. For decades she was a vital part of WME's USA outreach. She and her husband, Fred, operated the World Missionary Evangelism Food Pantry helping hundreds of families in need. Her faith and work are her legacy and live on through all who knew her.

A fitting way to remember either Wyman or Marcia is by giving a gift in their honor to the work they loved at WME. That is also a wonderful way to honor one of your loved ones. Memorial gifts can be designated for certain missions or simply given to our general fund. Many of our donors have used memorial gifts to do things such as build churches or drill water wells. You can give a memorial gift by calling 1-214-942-1678 or find out more by emailing us at mainoffice@wme.org.

Spotlight on... PRESSING NEEDS



SCHOOL SUPPLIES FOR POOR STUDENTS

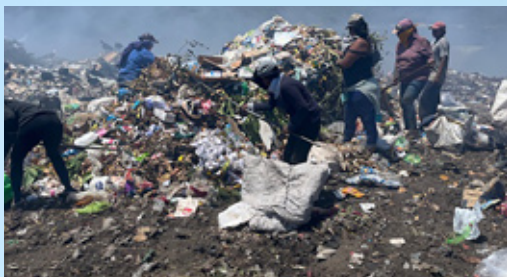
IN THE USA: WME works through our WME USA missions to supply children with school supplies and backpacks. Some of those who benefit are children who are staying in shelters with their mothers, and then there are those who come from extreme poverty whose parents do not have the means to purchase even pencils and paper. **A gift of any amount** can help us provide supplies for a child.

MEALS FOR CHILDREN IN OUR SCHOOLS:

A majority of the children we help educate come from impoverished backgrounds. In these places school lunches are not free. The meal you provide a child is often the only meal that child will receive that day. **A gift of \$15** can help us provide a weeks' worth of school meals for a poor child in a developing nation. This is a life-saving program.



SCHOOLS REPAIRS AND UPKEEP: Just like our own homes, schools have equipment that breaks down, furniture and appliances that need to be replaced, and roofs, windows, and doors that must be repaired. Keeping up with these unbudgeted items costs money. **A gift of any amount** can help us with this continual need. Utilities are also a pressing problem for our facilities. **A monthly gift of \$100 or more** can help us provide the utility service to these vital places of learning and growth.



REACHING THOSE AT THE DUMP.

In Nicaragua there is a landfill where families dig each day in heat, rain, and cold, scavenging for something that might keep them alive. These people,

wearing clothes they dug out of the trash, celebrate when they discover food they can eat or something they can sell. **A gift of \$100** can help us feed families and provide spiritual guidance to these people who truly are the poorest of the poor.

REACHING WIDOWS AND THE ELDERLY IN EASTERN EUROPE:

In Moldova and Romania, we can reach the elderly who live in abject poverty and have no government assistance. **With a gift of \$30** or more you can help us provide clothing, coats, shoes, blankets, food and medicine. These people are gentle and loving but have been forgotten by their families and the world. They truly are the least of these.



SEND WINTER BOOTS TO CHILDREN, WIDOWS, ELDERLY OR MISSIONARY FAMILIES IN EASTERN EUROPE:

In Eastern Europe, we are involved in an Annual Shoe Project. In Moldova, there is a Christian shoe manufacturer who provides winter boots and shoes at minimal cost. These good quality shoes and boots are made to withstand long, harsh winters. Our WME Ministry Partner supplies these shoes to children in state-run homes, elderly in area facilities, the poor and national missionary families. **With a gift of \$30**, you can bless someone in Eastern Europe with a warm pair of winter shoes.

COWS, GOATS, RABBITS & CHICKENS:

With farm animals, a family can enjoy eggs, milk, cheese and other products. They also can earn money by selling food and animal offspring. Cows, Goats, Rabbits, & Chickens – flock of chickens - **\$100**; a pen of rabbits - **\$100**; pair of milk goats - **\$150**; pig or hog - **\$200**; milk cow or water buffalo - **\$300**.





FEEDING SLUM CHILDREN IN SRI LANKA:

Our team in Sri Lanka works in slum areas where hungry children often dig food out of trash. As a part of the mission to provide children with education, safety, and Biblical lessons, there is also a feeding program. The meals this mission supplies are life savers. **A gift of \$25 or more** can help distribute meals to children from extremely poor families. During this time when Sri Lanka's economy is in chaos, this program is vital.

MUSICAL INSTRUMENTS & SOUND

SYSTEMS: Many village churches have few material things but are rich in faith. What little they do have, they share with people around them. It is difficult for these congregations to pull together funds for musical instruments or a basic sound system. Your gift can help a village congregation raise their voices in praise to the Lord. Musical instruments are **\$50 to \$100**. A sound system is **\$200**.



WME HEADQUARTERS: Due to inflation, the cost to maintain our facilities has gone up. The price of utilities, maintenance, transportation, mailings, communications, and equipment have doubled over the past decade. We do not want these costs to affect our ability to reach the lost and suffering in the mission field. **A designated gift of any amount** for our office would enable us to meet our expenses and expand our missions and outreach in developing nations.

Designated gifts provide for needs that may fall outside our sponsorship programs. Please consider helping us with one of these this month!

Soles For Poor Souls



In so many areas where WME has missions, we minister to people who are so poor they don't even have shoes. This year World Missionary Evangelism is launching a shoe drive to reach children and adults in Eastern Europe, Africa, Asia, Central America, and Mexico. If you could give just \$20, you could purchase a pair of shoes for a poor person. A gift of \$200 could buy ten pairs of shoes. Please consider giving the gift of shoes this year opening the door for us to share the Good News.

Do you have a will?



Many experts believe it is one of the most important documents that you can put in place for your loved ones.

Did you know that many supporters of World Missionary Evangelism choose to use this legal document to set up a final memorial gift to WME? This may be something you are interested in doing as well.

For those who are thinking about putting a will or trust in place and who are considering what issues or questions to raise with a legal and/or tax professional, one tool that can help you start this process is our brochure **GIVING THROUGH YOUR WILL**. It is yours free and without obligation.

Simply send your written request for *Giving Through Your Will* to:

WME, Inc.
P.O. Box 4326
Dallas, Texas 75208

You can also send your request by e-mail to mainoffice@wme.org

Because the legal and tax requirements for setting up a will or trust vary widely from state to state and from country to country, you will need to contact a legal and/or tax professional within your area — someone with the expertise and knowledge to help you.

SPONSORSHIP

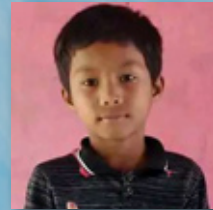
Touching A Life Everyday Of The Year!

87124 Princess is a six-year-old girl who lives in the Philippines. She has two siblings and is a middle child. Her parents scratch out a living as farmers. She loves to dance and tells us she wants to be a teacher.



87125 Rey is a seven-year-old boy who lives in the Philippines. He is the youngest child in his family. His father is a farmer. He dreams of one day becoming a policeman.

87145 James is a 10-year-old boy who lives in the Philippines. His father is a farmer. He loves sports.



87235 Merre is an only child, is twelve years old, and lives in the Philippines. Her father is a farmer. She loves to read and wants to be a teacher.

87232 Jemuel is nine, and he lives in the Philippines. His parents make and sell charcoal. He has four siblings. He loves to sing, play games, and help his family in the garden.



Native Missionaries

Spreading the Word to the Lost!

83112 JULIAN is thirty-nine, and lives in Sri Lanka. He is a graduate of the Minnesota School of Theology. He is married and has two children. He is leading a church in his country.



86991 ERLINDA is fifty-three and lives in the Philippines. For thirty years she has been a partner with her husband in ministry. She is a worship leader, a Christian educator, and manages the church's children's ministry. She is also a health professional working for the government.

83524 Bhanu is thirty-nine and lives in India. He accepted Jesus as his Savior and was called to serve as a missionary. He has led many to Christ and works for WME of India.



P.O. Box 660800 Dallas, Texas 75266

214-942-1678

(Mon-Thurs 7:30 AM - 4:00 PM)

www.wme.org Email: mainoffice@wme.org

Email Address _____ @ _____

1/MG/25

I am enclosing a gift to help WME with its ministry and work.

[] Churches/Building Fund - \$3,000.00 and up [] Wells/Water Projects - \$3,500.00 and up
 [] Food For Hunger \$ _____ [] Native Missionary Sponsorship - \$40.00 # _____
 [] Child Sponsorship - \$35.00 # _____ [] Special Gift \$ _____
 [] United States Food For Hunger \$ _____ [] Where Needed Most \$ _____

Name _____

Address _____

City _____ State _____ Zip _____

[] Check enclosed. (Please make your check payable to World Missionary Evangelism Inc)

Amount: \$ _____ [] MasterCard [] Visa [] American Express [] Discover

Credit or debit card # _____ Expiration date _____

Signature _____ Phone Number _____

If you wish to give by electronic check, please call 1-214-942-1678.

I understand that indirect as well as direct expenses are involved in this work and intend my pledge to be used for both. I understand and agree with your Financial Policy as stated in WME's *World Evangelism* Magazine. **Canadian Contributors:** Please address your mail and your contributions to: World Missionary Evangelism Canada, P. O. Box 6088, Fort St. John, B.C., Canada V1J 4H6. Make your checks payable to World Missionary Evangelism Canada (Canadian Registration #849145297 RR 0001).





P.O. BOX 660800
DALLAS, TEXAS 75266

ADDRESS SERVICE REQUESTED

Non-Profit Org.
U.S. Postage
PAID
Permit No. 5013
Dallas, Texas

☐ If you do not wish to receive this magazine, mark an (X) in the box at the left, clip this with your address and mail it to us.

IS YOUR ADDRESS CHANGING? Clip out your address. Send it with your new address, to the address above.